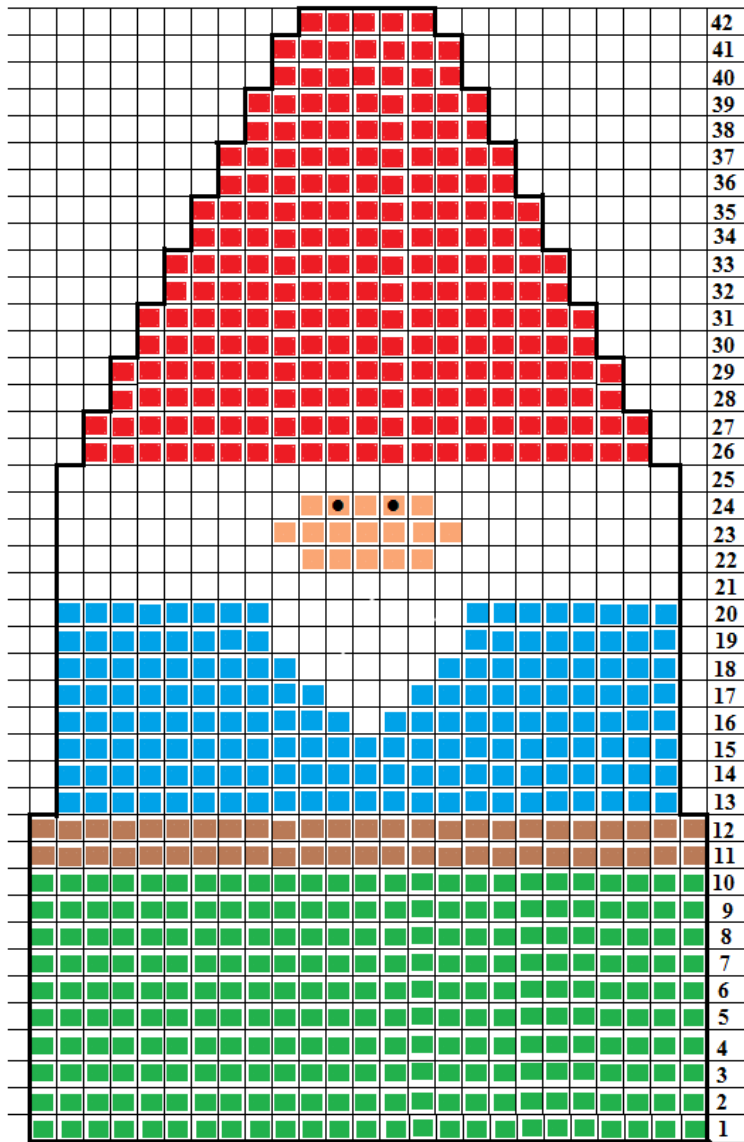


# Gnome Ornament

By Maria Ann Youngs

Machine: Standard 4.5mm  
 Yarn: I Love This Yarn (Hobby Lobby)  
 Gauge: not important  
 Tension: 7

Notes: Begin with a weaving cast on for easier gathering for finishing. Use a one prong transfer tool for edge decreases throughout - follow the chart for the decreases. Manually select the needles for the sections with the beard and face, knitting in Fairisle the two colors.



Rows 26 – 42: Hat – decrease 1 stitch every other row, ending with 5 stitches on RC 42. Gather off.

Rows 22 – 26: Face & Hair – manually select needles for second color and knit in Fairisle.

Rows 16 – 20: Beard & Shirt – manually select needles for second color and knit in Fairisle.

Rows 11 & 12: Belt

Rows 1 – 10: Pants

Begin: cast on 25 stitches with weaving technique

Finishing: Seam the back. Stuff with fiber fill. Gather the bottom. Add a ribbon at the top of the hat for hanging and draw eyes as indicated with a fine tip Sharpie or fabric marker.