



THE KNIT STITCH

We've been having so much fun it's difficult to know what to write about!

Summer is here! Cotton typically surges forward as the yarn of choice for our summer wear. If you haven't tried cotton on your knitting machine yet, jump in the water is fine! The thing to remember is that cotton is not as forgiving as wools and acrylics. Be sure to cast on loosely and err on the side of a looser vs. a tighter tension to start. I've broken many needles thinking I could knit a cotton yarn at the same tension as I would a similar weight of acrylic or wool.

Cottons and cotton blends have some of the most fabulous colors I've ever worked with – from deep rich color to the palest of colors. However, especially with those deep rich colors, these can fade quickly in the wash. Here are some tips to keep your colors bright and to prevent them from fading as much as possible.

Tip A

1. You'll need
 - a. 1 Cup White Vinegar
 - b. ½ Cup Salt
 - c. Color Safe Detergent
2. Set your washing machine to cold water wash/cold water rinse
3. Fill your washing machine tub to half full
4. Pour in the vinegar, salt, and detergent
5. Engage the agitator for 2 minutes to dissolve the salt and integrate the solution
6. Add garment(s) to the washing machine one at a time to ensure they're fully soaked in the solution
7. Repeat until the wash water remains clear

Tip B

Use Dharma Dye Fixative, which can be found at www.dharmatrading.com. This dye fixative will increase wash fastness, offers resistance to perspiration staining, and seawater fading. It's used to fix dyes so fabrics won't bleed. It enhances the actions of soda ash (if you're doing your own dyeing) for darker fiber colors in the dye bath technique.

Tip C

Use Color Safe Detergent and Shout Color Catchers to ensure colors do not bleed. For example, Fairisle or weaving with two different colors such as red and white could possibly bleed into each other when washed. These new products help prevent this from happening.

Cotton yarn works really well in all our machine knitting techniques. One of my favorite patterns, included in this issue, is the tone on tone woven placemats made with cotton. Although the weaving technique lends itself to a vast array of color combinations, I've done many of these placemats in white on white as shower gifts. Pick the lucky couple's favorite colors and have some fun!

Many are afraid to try lace with cottons but they're so well worth the effort! Just remember while you're practicing, cotton doesn't like to stretch. Never to force your carriage lest you break several needles!

Happy Knitting!

*Dee Kupka
President*

TEXTILE CENTER

ROAD CONSTRUCTION UPDATE

Construction challenges for only four more meetings – July through October – YEAH!

As driving and parking changes occur they will be sent to members electronically prior to our meeting. If you have questions please contact the Textile Center, www.textilecentermn.org or call 612-436-0464.

TEXTILE CENTER NEWS

Timothy Fleming has been named as the new executive director. He studied textile conservation and restoration at the Metropolitan Museum of Art in NYC, and the dating of textiles in Venice, Italy.



✚ TEXTILE CENTER NEWS (CONT'D)

Timothy has also chaired the Minneapolis Institute of Arts' Textile Council. His recent background has been in residential interior design as well as cofounding Ampersand, a retail store now located in The Galleria. His tenure will begin the latter part of June.

The retirement party for Margaret Miller was an evening of sparkle and entertainment. Former employees, past and present, reminisced about the beginnings of Margaret's dream for the Textile Center. Her dedication has brought the Textile Center to an international audience by bringing together organizations and artists under one umbrella. The Margaret Miller Fiber Artist Award for Excellence endowment has been established with already over \$6,000 in donations to date. Centerpieces created by Textile Center Guilds were used as door prizes at the conclusion of the event. Winners were selected by way of a token placed under a chair at the table where the centerpiece was located. Maria Ann Youngs was the winner of a wonderful tea cozy, hot pad, and tea pot donated by the Minnesota Knitters' Guild. Karen Lehman knit the swan and added finishing touches to this delightful piece. Maria Ann will be adding the tea. MMKC contributed two dressed mannequins: Jane painted the mannequins to give them a "stone" appearance and weighed them down to prevent tip over, Maria Ann knit the dresses, and Dee made the necklaces. The winners of these were thrilled and thanked us profusely. A cascading Ruffle Scarf with a card listing the members of the Collaborative was given to Margaret in thanks for all her dedication. It was a truly memorable event with lots of sparkle!



VICE PRESIDENT REPORT

Machine Knitting Demonstration Day at the State Fair will be Wednesday, August 29. We will be using an LK150 mid-gauge machine and work on various items for charity. Two people at a time for two hour increments are requested, from 9 a.m. to 9 p.m. If you are willing and able please contact Jane at jsniemi@comcast.net. A sign- up sheet was available at the June meeting, but there are still available times. Admission tickets to the Fair will be available for volunteers.

Remember, there is less time than you think for County and State Fair knitting!

Jane Niemi

Vice President

MMKC EVENT – MN HISTORY CENTER

Our outing and tour into the archives of knit items at the MN History Center was a treat. We were fortunate to have Linda McShannock add many details and background to the things we saw. The knee highs that we saw were curious as they looked to be decorated with a fuzzy fringe, but so interesting to be told they are shown inside out as the 'fringe' was actually insulation from our cold Minnesota winters. Many antique knits were shown to us and then we were shown some Passap knit jackets made by locally known fiber artist Diane Tsurutani.

Also we saw swatches and a cardigan from Lori Ihnen, author of *A Garden Stroll*. Lori was part of the tour and shared some of the steps that she went through in her design and knitting process. This book is in the Textile Center Library – see page 16. See the Minnesota Historical Collections online: <http://greatriversnetwork.org/index.php?brand=ms>.

A big thank you to Linda for her help in making this outing possible!



MMKC PRESENTATION RECAP

April – Beginnings & Endings – Jane Niemi – no one walked away from this presentation disappointed! Jane taught cast on and bind-off techniques that are the foundation of machine knitting.

May – Machine Cleaning & Maintenance – Shawn Dolan – Is there a doctor in the house? Yes, it's you! Shawn did a fabulous job showing us all about machine cleaning and maintenance. There are things that those of us who have been machine knitting for 20+ years did not know!

Our June Presentation showcased the full line of **Cascade Yarns**. Shannon Dunbabin, a member of the family that owns Cascade Yarns and Stacy Kenneavy, Cascade Yarns representative gave us an overview of the yarns with the color cards. The quality of the fibers was discussed as well as the type of spin and how that affects texture or the integrity of the stitch. We got to touch all! Trying to keep track to make a choice of a favorite was difficult because the next yarn shown many times became the new favorite.

It was interesting to see how quickly we all became comfortable with Shannon and Stacy because of our common affinity for yarn. Shannon and Stacy even stayed for Show & Tell!



Rebecca Yaker-Bird will be showing us **Intarsia + Color Slip = Plaid** in July. She was inspired by a class she took at Yarnover and quickly translated what she learned into a machine knitting application and will be sharing with us.

PRESENTATION SCHEDULE

July	Intarsia + Color Slip = Plaid
Aug	Color Discharge/Shibori
Sept	Socks – Short Rows on a Circular Machine
Oct	Knit-weave
Nov	Short Rowing
Dec	Raglans/Garment Construction

STATE FAIR

The 2012 Creative Activities Book is now published on the 2012 Minnesota State Fair website www.mnstatefair.org.

Remember, MMKC is sponsoring ribbons and awards for first place in the following categories:

- ✧ Outerwear, adult: coat, jacket, poncho or shawl
- ✧ Toy
- ✧ Dress or suit, adult

KNITTIN' PURLS

Thank you to everyone who is knitting and donating items to our charity projects this year. A special thank you goes to, Patsy, for contributing donated yarn to use on our machines for Bundles of Love!

If you haven't seen these projects on Ravelry yet, take a look! They're perfect for Bundles of Love.

<http://www.ravelry.com/projects/Vonkad/baby-animal-hat>

<http://www.ravelry.com/projects/Vonkad/lace-baby-beret>

MAY KNIT IN RECAP

We had a great time but we forgot to take pictures! It was a productive knit in – we made ruffle scarves, baby sweaters, and a vest to name a few items. We also tried knitting with wire on the Brother 950i 4.5mm machine and I actually got a swatch done!



DEALER'S CORNER

Carole Wurst – Rocking Horse Farm
25636 County Road 74
St. Cloud, MN 56301-9293
320/252-2996
Email: rhfarm@earthlink.net
Website: <http://home.earthlink.net/~rhfarm/>

Carole has been in business for over 30 years. Her shop, Rocking Horse Farm in St. Cloud sells Silver Reed Knitting Machines, accessories, and parts **and** previously-owned Studio, Brother, and Passap knitting machines, accessories, and parts. The *Rocking Horse News* is published quarterly and is filled with pattern ideas, tips, techniques, fiber trends, and special discount offers for current paid subscribers.

There is no way to list all the things Carole carries in her shop – roving and spinning wheels, needle felting, embroidery machines, knitting machines, hand-knitting needles and accessories. She has a vast array of yarns and some truly fabulous novelty yarn and sock yarn. She's the author many pattern books including *Sensational Scarves*, *The Bulky Book*, *G-Carriage Tips, Tricks, and Techniques*, *Design-a-Knit Seminar Notes*, to name a few. Carole also demonstrates at seminars across the country.

Knit-ins, workshops, teas, and St. Distaff day events are offered at Rocking Horse Farm. Check the RHF website for monthly meetings.

Carole works alongside her son, Jason, who not only is a fabulous musician but is also an incredible machine knitter. He's always on top of the latest design trends and has several published machine knitting patterns as well.

This is just the tip of the iceberg in what can be found at Rocking Horse Farm. Please visit the website or call and say 'hello' to Carole or Jason. They are a lot of fun and are great resources in our machine knitting community.

FROM MARIA ANN YOUNGS...

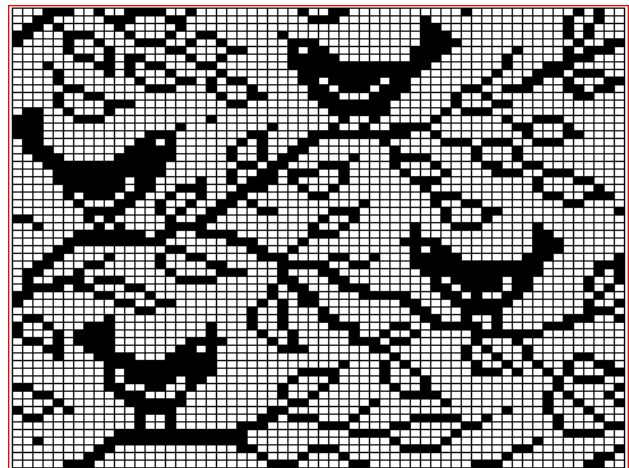
These past few weeks I have been thinking about the State Fair and what categories I might like to enter. In the past, I have found participating in the State Fair competition very rewarding. I love

knowing that thousands of people are looking at the textiles in the Creative Activities building where my knits are displayed. I have received constructive criticism from the fair judges that has helped me improve my finishing skills. After several days (more like weeks) of looking at the various categories, I have finally made my decision about what I will enter! I hope each of you will consider entering something you are proud of.

Several MMKC members were able to take advantage of the tour at the History Center in June. We were privileged to be able to more closely view vintage garments. I was fascinated by some of the construction techniques. I feel like my creative juices got a push! We also saw some contemporary items, reminding us that knitting is alive and well.

Just a reminder, for the August presentation on color discharge, if you'd like to participate in the hands-on you will need a swatch knit out of a dark (navy, black, brown) cotton yarn (or other cellulose fiber – bamboo, linen, rayon). A good size would be approximately a 10"X10" square.

Happy Knitting!
Maria Ann



"Permission to reprint this design from *Wikibook Machine Knitting Illustration*"
By Gudde Fog, Denmark

"DISHCLOTH" BABY BIB

*ADAPTED FROM A HAND-KNIT PATTERN
BY MARIA ANN YOUNGS*

Bulky Machine Tension 6
Peaches & Cream or Sugar & Cream yarn
Gauge not important

Latch tool cast on 5 stitches
Knit 2 rows

Increase 1 stitch each side using the 2 prong transfer tool – leave empty needle (3rd needle in from edge) in work. Knit 2 rows
Repeat between * & * until you have 31 stitches

Decrease by transferring the 4th stitch from the edge to the 5th needle. Then, using the 2-prong transfer tool, move the outer two stitches in by one needle (onto needles 2 and 3 from the edge). Leave 4th needle from the edge in work and the empty edge needle in non-working position. Knit 2 rows
Repeat between ** & ** until you have 19 stitches

Put 5 stitches opposite the carriage into Hold
Knit across remaining 14 stitches. Latch tool cast-on over the 14 needles in work. Latch tool bind off the 14 stitches. Release hold.

Knit 50 rows on remaining 5 stitches. Make a one stitch button hole by moving the center stitch 1 needle to the right leaving empty needle in work. Knit 6 rows. Move center stitch 1 needle to the right leaving empty needle in work. Knit 6 rows.

Latch tool cast-on over the 5 needles. Latch tool bind off. Attach button.



WOVEN PLACEMATS

BY DEE KUPKA

Notes: For base yarn you can use any combination of yarn weight or fiber content depending on the feel you want for the finished item. This is a very easy and good starter project for learning the knit-weave capability on your machine. Add or remove stitches and/or rows for larger/smaller placemats.

Machine: Standard (4.5mm) Tension 8
Base Yarn: 4 Strands 16/2 or 2 Strands 10/2 Cotton
Weft: 1 Strand Conshohocken or Softball Cotton

Scrap and ravel over 144 needles with the following needle set-up 2 needles, skip 10 needles, 120 needles, skip 10 needles, 2 needles.

With base yarn, latch tool cast-on over 144 needles skipping those 10 needles out of work on each side. This creates an automatic fringe. Knit 1 row. Put your carriage in slip and pass carriage to right. Release slip. Latch tool cast-on behind the knitting on the needles. Knit 1 row.

RC000. Start pattern of choice; turn on weaving functionality. Read your manual for instructions based on your make/model of knitting machine. For Brother Machines, set your KC button to 1, knit 1 row for needle selection, and then flip your weaving brushes to the up position on the sinker plate of your carriage.

Lay the weft or weaving yarn over the selected needles (D or pattern position) within the 120 center needles. The yarn will lie across the selected needles, behind the latches and against the sinker posts. Be sure the short end of the weft yarn is closest to the carriage. Hold lightly onto the weft yarn opposite the carriage (to provide some tension) and at or slightly below needle level. Knit across. Repeat weaving procedure to RC 130. Stop patterning.

RC000. Knit 1 row stockinette. Latch tool cast-on across the needles behind the knitting. Knit 1 row. Latch tool bind-off.

Finishing: Remove waste yarn and scrap; wash, dry, and block. I leave the edge 2 needles holding the fringe together so that I can pin this to get the straightest fringe possible while blocking. Cut off the two stitches attached to the fringe.



(Placemat)

WOVEN MUG RUG

BY DEE KUPKA

Machine: Standard (4.5mm) Tension 8
Base Yarn: 4 Strands 16/2 or 2 Strands 10/2 Cotton
Weft: 1 Strand Conshohocken or Softball Cotton

Needle Set-up 2 needles, skip 6 needles, 30 needles, skip 6 needles, 2 needles

Scrap and ravel over 46 needles. With base yarn, latch tool cast-on over 46 needles skipping the 6 needles out of work on each side for automatic fringe. Knit 1 row. Put your carriage in slip and pass carriage back to right. Release slip. Latch tool cast-on behind the knit row. Knit 1 row.

RC000. Read your manual for instructions on how to do knit-weave based on your make/model of knitting machine. For Brother Machines, set your KC button to 1, knit 1 row for needle selection, and then flip your weaving brushes to the up position on the sinker plate of your carriage.

Lay the weft or weaving yarn over the selected needles (D or pattern position) within the 30 center needles. The yarn will lie across the selected needles, behind the latches and against the sinker posts. Be sure the short end of the weft yarn is closest to the carriage. Hold lightly onto the weft yarn opposite the carriage (to provide some tension) and at or slightly below needle level. Knit across. Repeat to RC 36. Stop patterning.

RC000. Knit 1 row stockinette. Latch tool cast-on across the needles behind the knitting. Knit 1 row. Latch tool bind-off.

Finish: Remove scrap and waste; wash, dry, and block. Cut off 2 edge stitches on either side to create fringe.



(Mug Rug)

“Permission to reprint designs below from *Wikibook Machine Knitting Illustration*”
By Gudde Fog, Denmark

Hover over the image then click to activate hyperlink. Additional designs can be found at: [http://en.wikibooks.org/wiki/Machine Knitting/Patterns](http://en.wikibooks.org/wiki/Machine_Knitting/Patterns)

